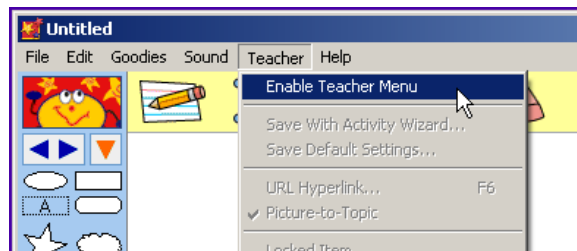
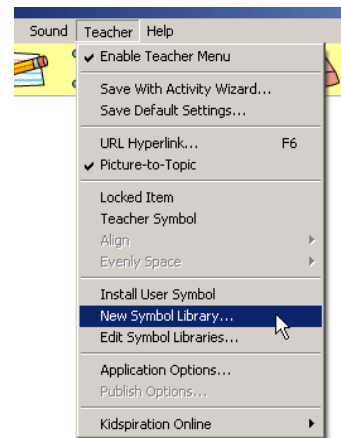


How to Create a Library for Kidspiration 2

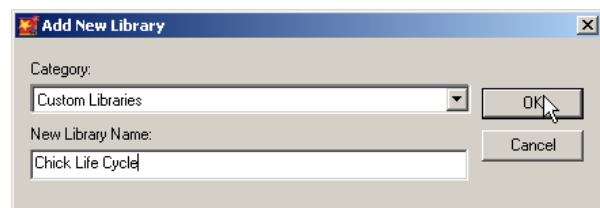
1. Click on *Teacher*, and then *Enable Teacher Menu*.



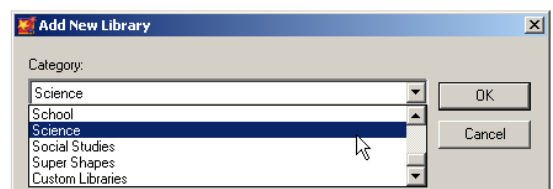
2. Click on *New Symbol Library*



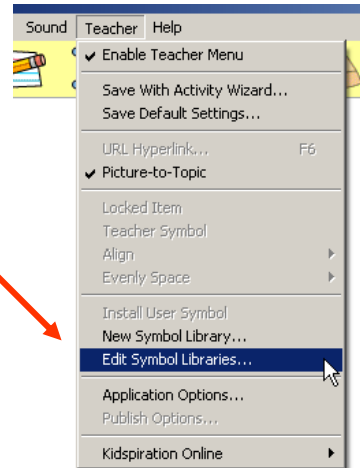
3. I named my symbol library *Chick Life Cycle*.



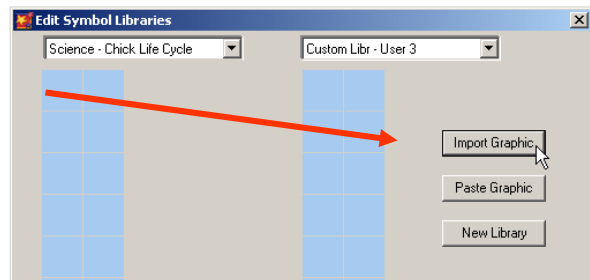
4. I chose to put my library in the *Science* Library.



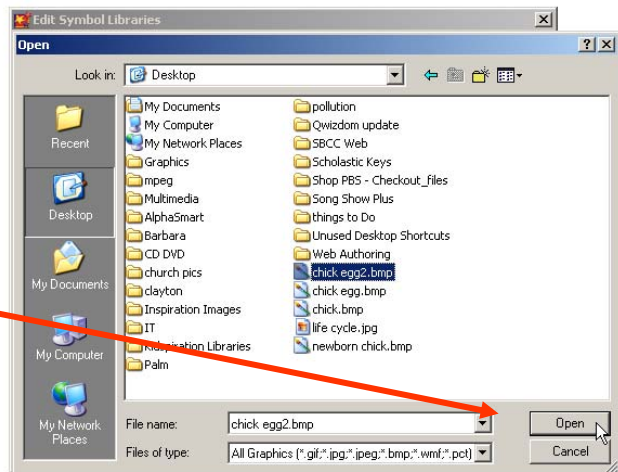
5. Click on *Edit Symbol Libraries*.



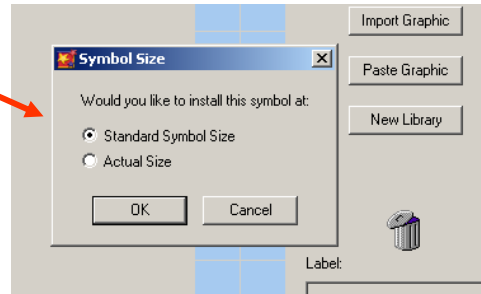
6. Click on *Import Graphic*



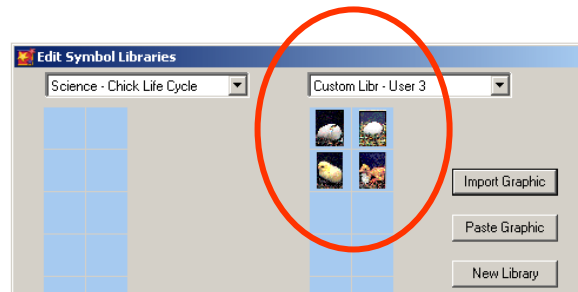
7. Browse to the place you have saved your pictures. Select the picture you want to import and click on *Open*.



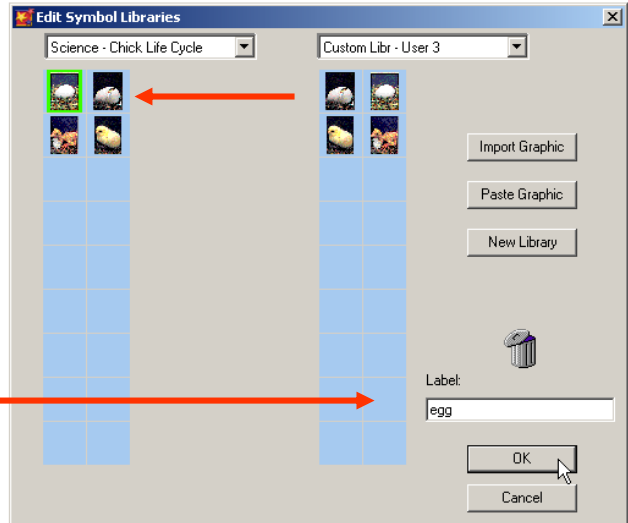
8. Click on *Standard Symbol Size*, and click on *OK*.



9. Import all the pictures you want in your new library folder.



10. Now drag each picture to the left column.



11. Label each picture.

12. Click *OK*

12. Your newly created library will be where you placed it. *My Chick Life Cycle* in *Under Science*.

